

# DODGEVILLE ELEMENTARY SCHOOL

404 North Johnson St., Dodgeville, WI, 53533  
Ph. 608.935.3307, Opt. 2 Fax 608.935.3021

PRINCIPAL  
Scott Marty

BOARD OF EDUCATION  
Michael Humke, President  
David Blume, Vice President  
Dennis Polglaze, Clerk  
Tom McGraw, Treasurer

ASSOC. PRINCIPAL  
Scott Tolzman

Michael Knoedler, Director  
Carrie Schroeder, Director  
Jessica Wiczorek Director



May 2nd, 2020

Dear prospective Early Learning Program families,

We are so excited and looking forward to meeting you and your child this coming fall! We would like to help you all feel as comfortable as possible in this new adventure in your lives: elementary school! Our goal is to help ease your nerves by giving you and your child some ideas of what to expect. Please review the additional materials we have included from our ELP Teachers.

In preparing for the upcoming year, we recommend the following:

- Read together every day...even after the school year starts!
- Practice learning alphabet letters and sounds.
- Have your child practice writing his/her name.
- Have your child practice counting and becoming familiar with numbers.
- Make sure your child can use the restroom by him/herself.
- Most importantly, please tell your child it is going to be a great year of learning and making new friends!

Please note that online enrollment is now open for incoming ELP students. If you are a new parent/guardian enrolling your first student in our district, [please follow this link](#) to enroll your student in DES. Current district parents/guardians please [click here](#) to enroll your child in DES. We will use the information you provide in the online enrollment to send updates about upcoming events for the 2020-2021 school year.

We look forward to meeting our future "Little Dodgers" next school year!

Welcome to Dodgeville Elementary School!

Mr. Scott Marty, Principal

Mr. Scott Tolzman, Assistant Principal

# New & Exciting!

**Dodgeville School District**

now offers

**4 Full Days  
of ELP**



## Early Learning Program (ELP)

- For children 4 years old by September 1<sup>st</sup>
- Follows Dodgeville School District Calendar
- Free bussing available to all
- Children will play, learn and grow together
- Half day program still available in the AM upon request

## Full Day Program offers:

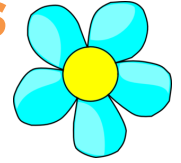
- More opportunities for instruction and interventions
- Access to school lunch
- 2 snacks per day
- Quiet rest time
- Less Transitions for children
- Participation in Specials such as Music, Phy Ed and Guidance
- More time for outdoor play

\*Children will not attend on Early Release Wednesdays.





# All About Dodgeville School District's Early Learning Program (ELP)



**Our mission is to provide an inclusive, developmentally appropriate early learning program that will enhance the social, emotional, physical, intellectual, language, and personal development of all young children in our community.**

**Exciting New Opportunity**  
ELP will be offered 4 full days! Children will attend Monday, Tuesday, Thursday and Friday.  
ELP is offered to all children who are 4 years old by September 1 of the current school year.

## Philosophy

**We believe:**

- **Children develop by being actively engaged in their environment, which supports and nurtures each child's unique developmental needs.**
- **Play is the way children process what they are discovering about themselves and the world.**
- **Teachers will work in a partnership with families by communicating regularly.**
- **Future school success improves through participation in a quality early learning program and instills a positive attitude towards learning.**

The Early Learning Program complies with the Wisconsin Model Early Learning Standards developed by the Wisconsin Department of Public Instruction. The standards address the following areas of development: Health and Physical Development, Social and Emotional Development, Language Development and Communication, Approaches to Learning and Cognition and General Knowledge.

We practice the Wisconsin Pyramid Model framework. The Pyramid Model is a multi-level framework, not a curriculum, for supporting development and social and emotional competence in young children.

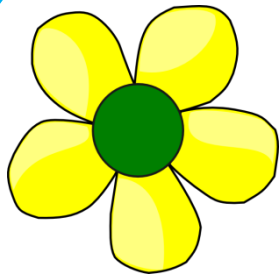
The Early Learning Program has a core curriculum that includes:

- Everyday Math
- Get Set For School
- Second Step
- Zones of Regulation

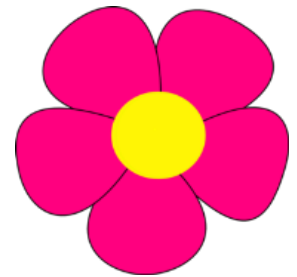
In ELP your child will:

- Listen to stories
- Sing songs
- Play games and puzzles
- Build with blocks
- Imagine, create and explore
- Color, write and use scissors
- Check out books from the school library
- Utilize technology
- Play on the play ground
- Eat snack
- Make friends
- Have fun





# Full Day ELP Schedule



**7:45-8:00** Arrival

**8:00-8:30** Morning meeting: Attendance, calendar, weather, Second Step, story/literacy, music

**8:30-9:45** Centers with small group activity

**9:45-10:00** Bathroom and snack

**10:00-10:30** Large Group Time: math, story/literacy and music

**10:30-11:00** Recess

**-----Dismiss AM only students-----**

**11:00-11:30** Lunch

**11:30-12:00** Bathroom, story/literacy

**12:00-1:00** Rest

**1:00-1:30** Quiet table activities  
(puzzles, books, manipulatives)

**1:30-2:00** Specials (PE, Library, Guidance, Music, Tech)

**2:00-2:15** Snack

**2:15-2:30** Story/literacy and music

**2:30-3:00** Recess

**3:00-3:15** End of day routines

**3:15** Dismissal



# ELP Supply List

**Large Backpack labeled with Name**

**1 plastic pocket folder labeled with Name**

**1 Large box of Kleenex**

**10 Glue Sticks**

**2 Boxes of 24 Crayola Crayons**

**1 box of 8-10 Wide Crayola Markers**

**1 1 Box of 8-10 Think Crayola Markers**

**2 Crayola Watercolor Paint Sets**

**1 box of Ziploc Bags**

**Clorox Wipes**

**Rest Mat**

**Headphones**

**(can be purchased from office for \$4)**

